

Moulded cold cure foam -greater possibilities



SANDELLA

Our vision

Sandella will be the best supplier of moulded cold cure foam and technical solutions where cold cure foam has clear market advantages.
 Total confidentiality regarding our customers’ products and ideas is an absolutely essential requirement.
 Through efficient capacity utilisation, cost-efficient operations and proper care for our customers, Sandella will be the partner of choice for the furniture industry and other relevant application areas.

Design

MOULDING HIGH ELASTICITY FOAM PROVIDES THE DESIGNER WITH GREATER FREEDOM OF CHOICE



With more than 40 years of accumulated know-how and close co-operation with designers and our customers’ product development departments, Sandella has specialised in moulding cold cure foam components.

Possibilities

MOULDED COLD CURE FOAM HAS CONSIDERABLY BETTER CHARACTERISTICS THAN OTHER ALTERNATIVES



Direct moulding and encapsulation of load-bearing metal inserts in the products provide the customers with a large potential for efficient, consistent production.

In addition to moulding with and without load-bearing steel inserts, Sandella can offer visco-elastic foam. We also have customers who use moulded foam for packaging.

Sandella cold cure foam meets all current requirements for fire safety in furniture in our markets in Europe, the United Kingdom, and the USA.

Production

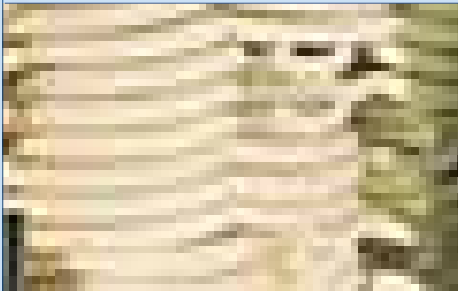
SANDELLA IS ONE OF EUROPE’S LARGEST SUPPLIERS OF MOULDED COLD CURE FOAM, HAVING THREE MODERN PRODUCTION FACILITIES.



Through knowledge, expertise and the necessary capacity, we have ensured a high level of quality and cost-efficient solutions. With our partners, Sandella works continuously to develop new products in the production process.

Quality/Comfort

FIRST CLASS COMFORT
 - LONG LIFE-SPAN



Moulded cold cure foam has unmatched qualities as regards comfort and durability.

Logistics/market

INTERNATIONAL BUSINESS ACROSS EUROPE AND NORTH AMERICA, OUR MAIN MARKETS.



Our three production facilities are strategically placed in Norway, Sweden and Denmark. The Danish plant is close to the German border, and convenient for the U.K., while both the Swedish and the Norwegian plants are located in central furniture production areas in their respective countries.

Std. Components

COMPLETE CONCEPTS AND STANDARDISED COMPONENTS



As part of its product range, Sandella offers a number of sliding/reclining chair variations and cushions. These are standardised models freely available on the market.



Design

THE MODELING OF A PROTO-TYPE IS THE VERY BASIS FOR A SUCCESSFUL RESULT



Continuous development and perfection of the moulding process, from model and prototype to the finished product. This creates a continuous expansion of the options in design and technique, providing the customer with a guarantee of first class expertise in every part of the process. Through long-term and continuous cooperation with the entire process chain, from component level to the finished product, we are able to provide good advice on how to optimise models for efficient production processes.



Possibilities

FROM MODELLING TO 3D-CUTTING OF MOULDS
-WE KNOW HOW



Our sophisticated design and development centre is located at our main factory in Sykkylven, where both our technical and marketing expertise is based.

With accurate moulds and production processes, we are able to meet our customers' demands for comfort, stability and elasticity. Sandella has so much experience in the production of components with integrated load-bearing inserts of all shapes and sizes. These can be made from wood, steel, or aluminium frames, as well as plastic and other inserts. In total, these kind of products make up 70% of our present production. With our three production facilities, Sandella can offer a wide range of products, from small 40 gram neck support cushions, to large 7-8 kilogram back rests. Furthermore, we can combine different degrees of hardness in the same mould, so-called Dual Hardness. An example of this is a cushion with a soft midsection and firmer edges.



SANDELLA



Production

FLEXIBLE AND FULLY AUTOMATED MOULDING PROCESS



The raw materials are transferred from the storage tank facility to the mixing tank through a closed computer-controlled system. This ensures uniform quality and maximum usage of the raw materials. The mixing systems have considerable flexibility, making it possible to meet most quality requirements as regards material mixtures. The filling of the moulds is also automated. This takes place in different production lines and makes an efficient and flexible production. The production itself takes place in closed systems without use of ozone-destructive CFC gases. When the chemical reaction is completed, the product is 100% stable and it does not give off any pollution through waste gases or harmful toxins.

With our three production plants and a total of six production lines, Sandella is the largest independent player within the European market for furniture.



Quality/Comfort

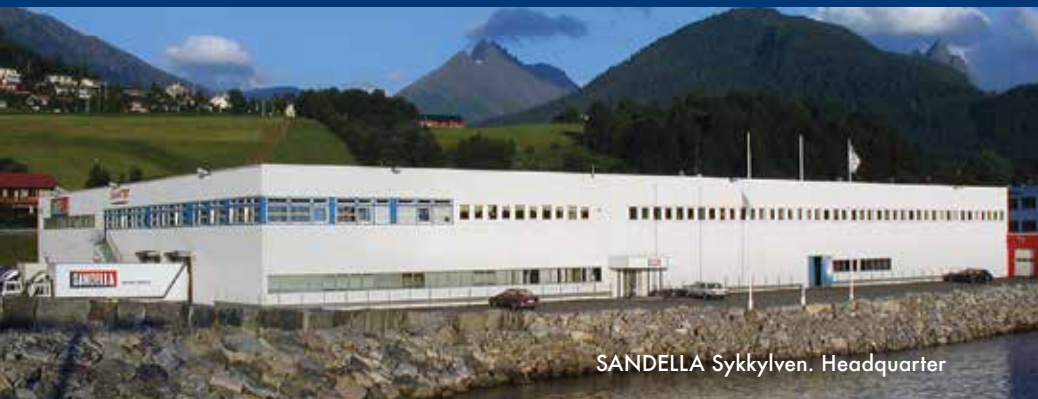
THE UNMATCHED QUALITIES OF MOULDED COLD CURE FOAM PROVIDE CUSTOMER-FRIENDLY SITTING COMFORT



The high degree of elasticity and the good side support provide the maximum correct sitting comfort no matter where you sit in the furniture. The moulded cold cure foam's unmatched qualities also provide the correct sitting depth for all requirements. Moulding also has the advantage that it is possible to adjust the softness and elasticity completely to the requirements of each individual product. Moulded cushions are particularly durable and maintain their original shape and quality even after several years' use. Moulded cold cure foam (polyurethane foam) has considerably improved and consistent qualities compared to the inconsistencies of slab stock foam. This is true for both the compression set and sag factor, which describe the foam's ability to take pressure without collapsing.



SANDELLA



SANDELLA Sykkylven. Headquarter



SANDELLA SVERIGE AB, Forserum



SANDELLA DANMARK AS, Tinglev

Logistics/Market

FLEXIBLE DISTRIBUTION,
ADAPTED TO OUR CUSTOMERS



Sandella is flexible as regards our customers' logistics systems. The delivery of the right quality in the right amount to the right time is given high priority. Sandella aims to keep its stock holding low, its efficiency and flexibility high and packaging and delivery adapted to the customer's wishes and requirements. As needed, moulded materials can be delivered directly on trolleys to local customers or packed in plastic or cardboard for delivery by truck to Scandinavia and Europe, or in containers to USA and Canada.



Std. components

FINISHED SOLUTIONS SUCH AS GLIDING CHAIRS, SOFAS AND CUSHIONS COMPLETE FROM ONE SUPPLIER



In addition to the customer-specific components, Sandella has developed a wide range of standard gliding chairs, sofas and cushions. These are models that may be combined in numerous ways, especially as regards backs and arm-rests, based on one system. This provides our customers with unique opportunities to easily implement and adapt to already developed models in their product ranges. There are major advantages in the customers getting all their components from one supplier, simplifying our customers' logistics and internal production processes.

This is a small selection of our standard products. Please ask for our catalogue.



Special components made from moulded cold cure foam for packaging and other product areas are a growing market. Sandella sees several opportunities in new markets and this will be one of our future focus areas.

Environment



The use of moulded PUR foam creates less production waste material than the use of cut foam blocks. Sandella Fabrikken works towards defined environmental goals. Sandella Fabrikken is Eco-Lighthouse certified (certificate no. 373).

Eco-Lighthouse is an environmental certificate issued by the Norwegian government for small and medium-sized enterprises. It is based on the same principles as the EMAS and ISO 14001 environmental standards, but is less extensive. For more information, see www.eco-lighthouse.com.

This means that Sandella Fabrikken, among other things, works to sort and recycle all production and operation waste. Sandella Fabrikken issues an environmental report for each year.

SANDELLA



SANDELLA

PRODUCTION PLANTS

NORWAY

Sandella Fabrikken AS

P.O.Box 160

N-6239 Sykkylven • Norway

tel.: +47 70 24 51 00

email: sandella@sandella.no

NORWAY

Shape AS

Kjøpmannsgt. 23

N-6005 Ålesund • Norway

tel.: +47 70 10 32 70

email: post@shape.no

LITHUANIA

Superlon Baltic UAB

Pramones 3B

LT-351 00 Panevezys • Lithuania

tel.: +370 45 424 790

email: office@superlonbaltic.eu

SWEDEN

Foam Construction AB

Svarvaregatan 5

SE-233 51 Svedala • Sweden

tel.: +46 40 40 20 65

email: info@foam-construction.se