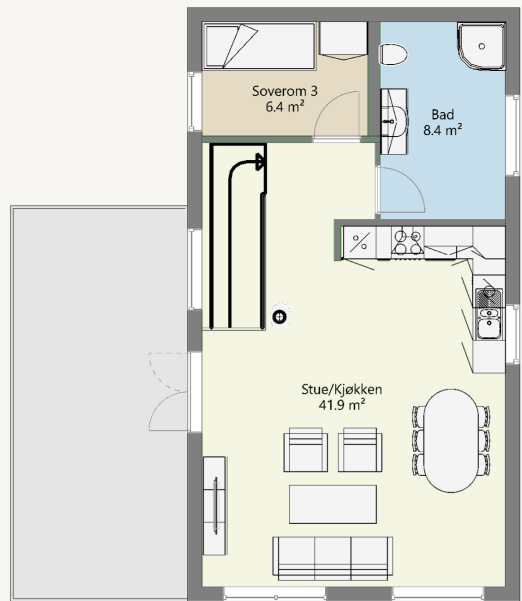


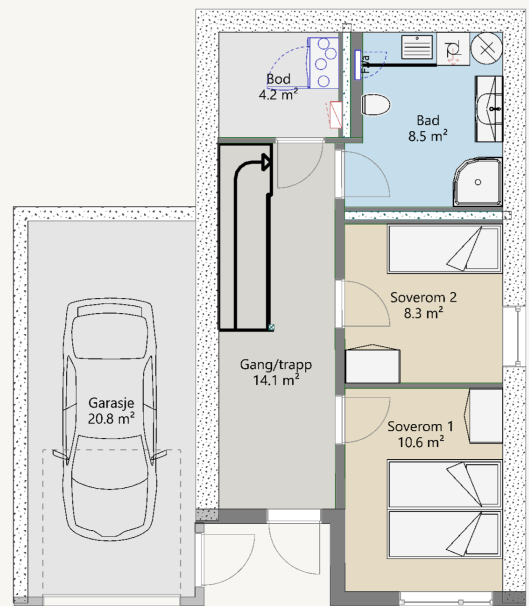
FASADER



PLAN 2



PLAN 1



KVITTIND

BRA:	107 m2	P-ROM:	98 m2	EGET VASKEROM:	Nei
BRA—total:	128 m2	SOVEROM:	3	TOMT:	Skrå
BYA:	89 m2	BAD / BOD:	2 / 1	GESIMSHØYDE—lav:	Gj. Snitt 440 cm
L X B:	6,0 X 10,8 m	WALK-IN CLOSET	0	GESIMSHØYDE—høy:	Gj. Snitt 525 cm