

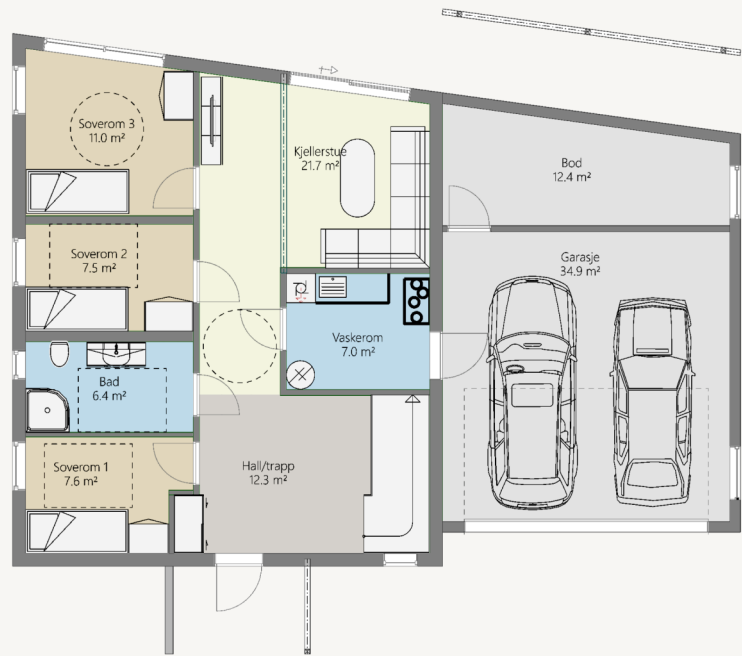
FASADER



PLAN 2



PLAN 1



BLÅTIND

BRA:	162 m2	P-ROM:	142 m2	EGET VASKEROM:	Ja
BRA—total:	209 m2	SOVEROM:	4	TOMT:	Flat
BYA:	159 m2	BAD / BOD:	2 / 1	GESIMSHØYDE—lav:	570 cm
L X B:	14,8 X 14,3 m	WALK-IN CLOSET	1	GESIMSHØYDE—høy:	667 cm