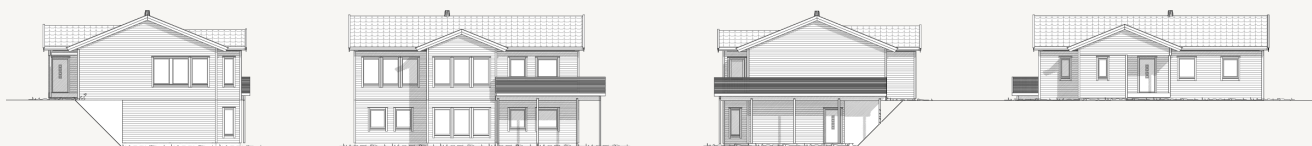
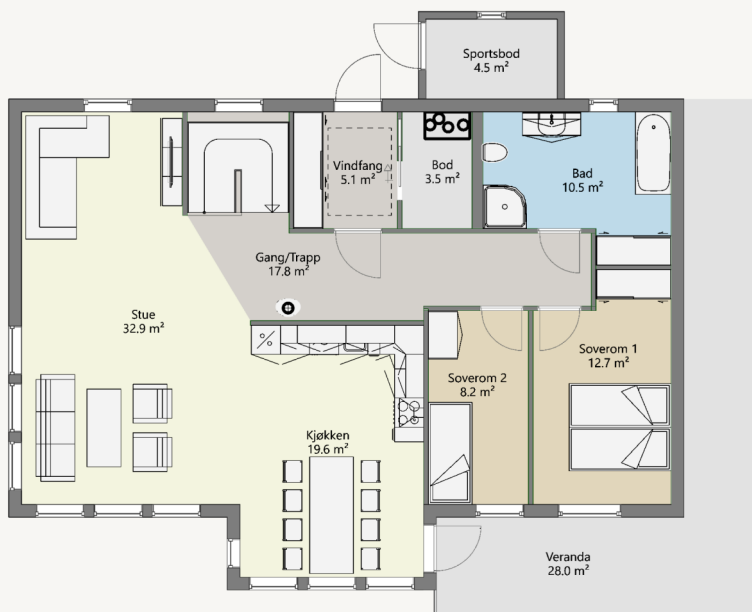


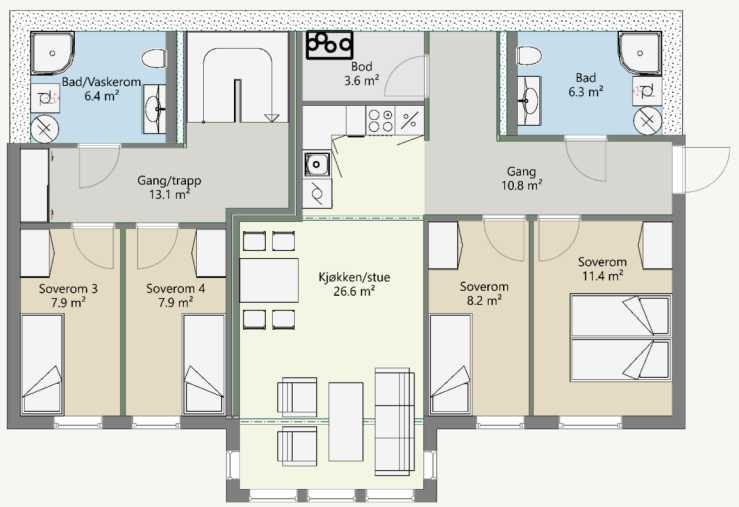
FASADER



PLAN 2



PLAN 1



SNØTIND

UTLEIELEILIGHET

BRA:	151 m ²	P-ROM:	122 m ²	EGET VASKEROM:	Nei	BRA:	70 m ²
BRA—total:	226 m ²	SOVEROM:	4	TOMT:	Skrå	P-ROM	63 m ²
BYA:	179 m ²	BAD / BOD:	1 / 1	GESIMSHØYDE:	Gj. snitt 592 cm	SOVEROM	2
L X B:	13,8 x 11,8 m	WALK-IN CLOSET	1	MØNEHØYDE:	Gj. snitt 764 cm	BAD:	1